

## **Outreach**

**Vicky Evans** is our Family Outreach Worker and supports families with children aged 0-5 years.

We can support you both in the home, at the centre or in the community.

Some families ask for support with a specific issue, whilst others want to chat through their worries or achievements.

We offer information on childcare, training, activities and groups in the community.

*For more information please contact **Vicky**.*

## **Who We Are....**

**Claire Howells** — Centre Manager

**Jane Hickson** — Administrator

**Vicky Evans** — Senior Outreach Worker 0-5

## **What's On at.....**

## **Farsley/Calverley**

## **Children's Centre**



## **Useful Numbers**

### **Police (Non emergency)**

101

### **NHS Helpline**

111

### **Leeds Domestic Violence Helpline**

0113 246 0401

### **National Domestic Violence Helpline**

0808 2000247

### **Men's Domestic Violence Advice Line**

0808 8010327

### **Support After Rape and Sexual Violence Leeds**

0808 802 3344

### **Pudsey Health Centre**

0113 295 3200

### **Children's Centre Advice Service (Formally CAB)**

0113 2753498

### **Leeds Dental Advice Line**

0800 2985787

### **Family Information Service**

0800 7310640

[www.familyinformationserviceleeds.co.uk](http://www.familyinformationserviceleeds.co.uk)

**Farsley/Calverley Children's Centre**  
**offers a wide range of groups and**  
**activities for local families with**  
**children age 0-5 years.**

## **Charging Policy**

Since September 2014 there is now a £2 charge per child for crèche. Some of our adult learning courses include charges for registration fees. You will be asked to pay your registration fees or crèche, not both.

Play and Learn Group is 50p per session.

Parent and Toddler is £1 per child.

Baby Massage @ FCCC £20 (5 week course).

We want children and families to attend our activities so if these charges will prevent you from attending please speak to a member of staff.

## **Contact us**

Farsley/Calverley Children's Centre  
Farsley Farfield Primary School  
Infant Site, (North Building), Cote Lane  
LS28 5ED

Tel: 0113 2058134

Email: [childrenscentre@farsleyfarfield.org.uk](mailto:childrenscentre@farsleyfarfield.org.uk)  
[www.facebook.com/farsleycalverleychildrenscentre](http://www.facebook.com/farsleycalverleychildrenscentre)

# Monday

## Childminders Drop In

9:15-10:45am

Group for registered childminders and the children in their care to take part in a fun learning experience.

Contact **Nicola Anderson** for more information. 07794 832587.



# Tuesday

**Family Learning—Lotions & Potions—with Maths & Science**  
10 week course

Starts Tuesday 16th January 2018

9:00-11:30am

A fun and creative group for adults.

Crèche available. **Booking is essential.**



## Well Baby Clinic

1:00-3:00pm

**Appointment only** baby clinic.

10 minute appointments available 1.00-2.50pm.

**To book an appointment**

**Please contact Leeds Community Healthcare on 0113 843 5683.** Please bring your red book.



## Parent Space

**Appointment only**

One-to-one time to explore emotions and share worries you may have about your child. Contact the centre for more information.



# Wednesday

## Parent and Toddler Group

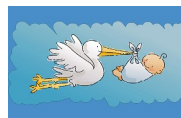
9:00-10:45am

A fun session for children to enjoy new experiences and meet other children. Please contact **Vicky** at the centre.



## Pregnancy Birth and Beyond

A supportive course for parents to be that helps prepare you and your family for the arrival of your baby and after birth experiences. Speak with your **midwife** or **Health Visitor** for more information on 0113 843 0500.



# Thursday

## Baby Massage

(5 week course)

10:00-11:00am

**Our next course starts on 19th April.**

Come and join Vicky to learn techniques to massage your baby in line with the IAIM.

**Booking is essential.**

Contact the centre to book your place.



# Friday

## Paediatric First Aid for Parents

10:00-12:00

**Our next course starts on 16th March.**

£10 per person.

**Booking is essential.**



## Play and Learn for under 2's

2:00-3:15pm

A chance to meet parents and enjoy fun activities with your child.

Contact **Vicky** at the centre for more information.

